

Flygt 3045.091/.181

Table of Contents

1 Introduction.....	2
1.1 Specially approved products.....	2
2 Product Description.....	3
2.1 The data plate.....	3
2.2 Approvals.....	3
2.3 Product denomination.....	5
3 Exploded View.....	7
3.1 Drive Unit and Hydraulic Unit.....	7
3.1.1 CF.....	7
3.1.2 CP.....	9
3.1.3 CS.....	11
3.1.4 DF.....	13
3.1.5 DP.....	15
3.1.6 DS.....	17
3.2 Installation Components.....	19
3.2.1 CF/CS/DF/DS.....	19
3.2.2 CF/CS/DF/DS.....	20
3.2.3 CH.....	21
3.2.4 CP/DP.....	22
3.2.5 CP/DP.....	23
3.2.6 CP/DP.....	24
4 List of Parts.....	25
4.1 3045.091/181.....	25

1 Introduction

Purpose of this manual

The purpose of this manual is to provide necessary information on spare parts and accessories order.

Disclaimer

Always use genuine Flygt parts. The use of other spare parts or accessories can invalidate any claims for warranty or compensation. Xylem does not take any responsibility for damages that are caused by the use of non-original parts. For more information, contact your local sales and service representative.

Data for ordering spare parts

The following information is needed for spare part orders:

- Serial number of the product
- Part number
- Quantity of bulk material, see * in tables

1.1 Specially approved products

Qualification of personnel

Only Xylem or Xylem-authorized service personnel may undertake repair work on specially approved products.

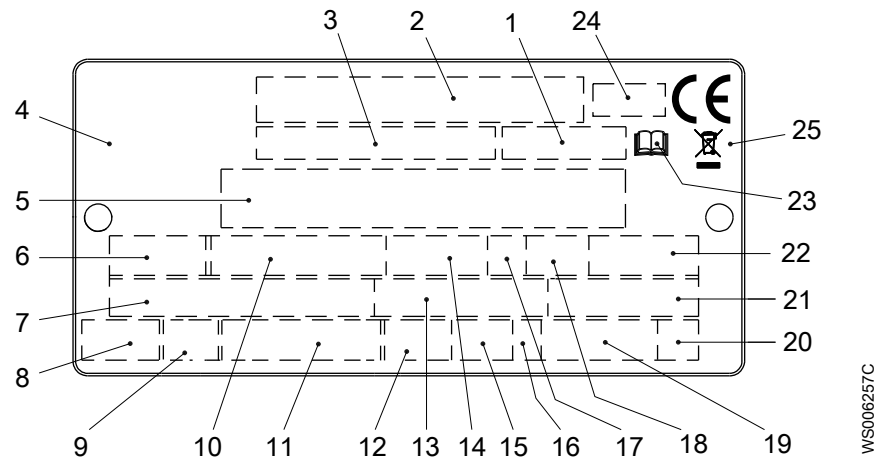
Dimensional accuracy inspection

Spare parts marked with (Ex) after the part number are subject to dimensional accuracy inspection when used in specially approved products.

2 Product Description

2.1 The data plate

The data plate is a metal label that is located on the main body of the products. The data plate lists key product specifications. Specially approved products also have an approval plate.

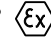


1. Curve code or Propeller code
2. Serial number
3. Product number
4. Country of origin
5. Additional information
6. Phase; type of current; frequency
7. Rated voltage
8. Thermal protection
9. Thermal class
10. Rated shaft power
11. International standard
12. Degree of protection
13. Rated current
14. Rated speed
15. Maximum submergence
16. Direction of rotation: L=left, R=right
17. Duty class
18. Duty factor
19. Product weight
20. Locked rotor code letter
21. Power factor
22. Maximum ambient temperature
23. Read installation manual
24. Notified body, only for EN-approved Ex products
25. WEEE-Directive symbol

Figure 1: The data plate

2.2 Approvals

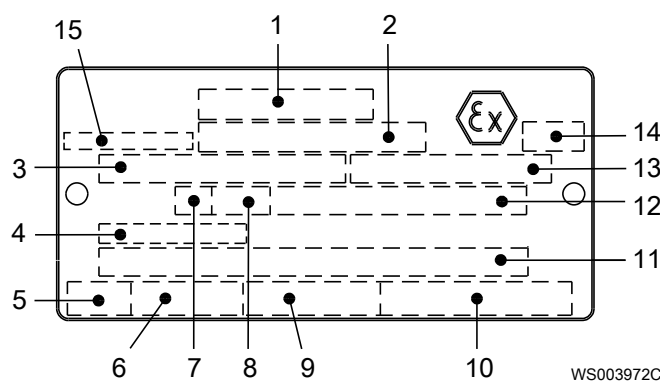
Product approvals for hazardous locations

Pump	Approval
3045.09 1	European Norm (EN) <ul style="list-style-type: none"> • ATEX Directive • EN 60079-0:2012/A11:2013, EN 60079-1:2014, EN ISO 80079-36:2016, EN ISO 80079-37:2016 •  II 2 G Ex db h IIB T4 Gb

Pump	Approval
	IEC <ul style="list-style-type: none"> • IECEx scheme • IEC 60079-0:2011, IEC 60079-1:2014; IEC 80079-36:2016; IEC 80079-37:2016 • Ex db h IIB T4 Gb
	FM (FM Approvals) <ul style="list-style-type: none"> • Explosion proof for use in Class I, Div. 1, Group C and D • Dust ignition proof for use in Class II, Div. 1, Group E, F and G • Suitable for use in Class III, Div. 1, Hazardous Locations

EN approval plate

This illustration describes the EN approval plate and the information that is contained in its fields.

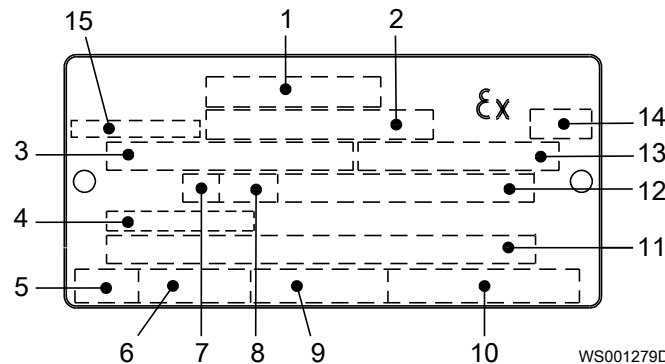


1. Approval
2. Approval authority and Approval number
3. Approved drive unit
4. Cable entry temperature
5. Stall time
6. Starting current or Rated current
7. Duty class
8. Duty factor
9. Input power
10. Rated speed
11. Additional information
12. Maximum ambient temperature
13. Serial number
14. ATEX marking
15. Country of origin

IEC approval plate

This illustration describes the IEC approval plate and the information that is contained in its fields.

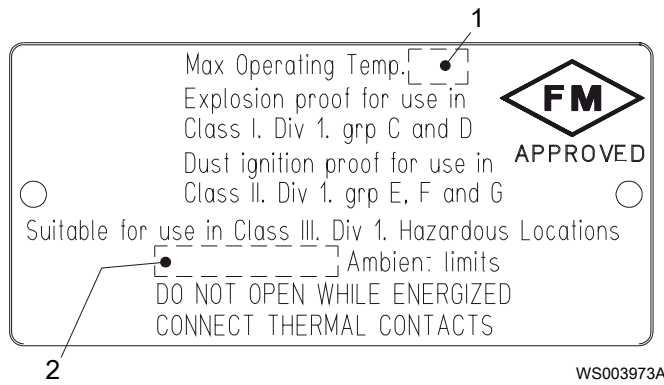
International Norm; not for EU member countries.



1. Approval
2. Approval authority and Approval number
3. Approved drive unit
4. Cable entry temperature
5. Stall time
6. Starting current or Rated current
7. Duty class
8. Duty factor
9. Input power
10. Rated speed
11. Additional information
12. Maximum ambient temperature
13. Serial number
14. ATEX marking
15. Country of origin

FM approval plate

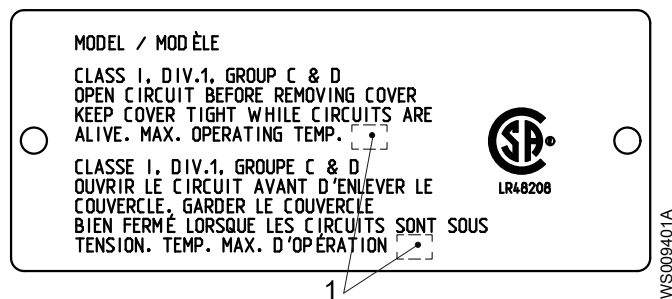
This illustration describes the FM approval plate and the information that is contained in its fields.



- 1. Temperature class
- 2. Maximum ambient temperature

CSA approval plate

This illustration describes the CSA approval plate and the information that is contained in its fields.



- 1. Temperature class

2.3 Product denomination

Reading instruction

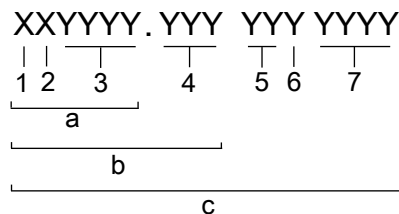
In this section, code characters are illustrated accordingly:

X = letter

Y = digit

The different types of codes are marked up with a, b and c. Code parameters are marked up with numbers.

Codes and parameters



WS006265B

Type of Callout	Number	Indication
Type of code	a	Sales denomination
	b	Product code
	c	Serial number
Parameter	1	Hydraulic end
	2	Type of installation
	3	Sales code
	4	Version
	5	Production year

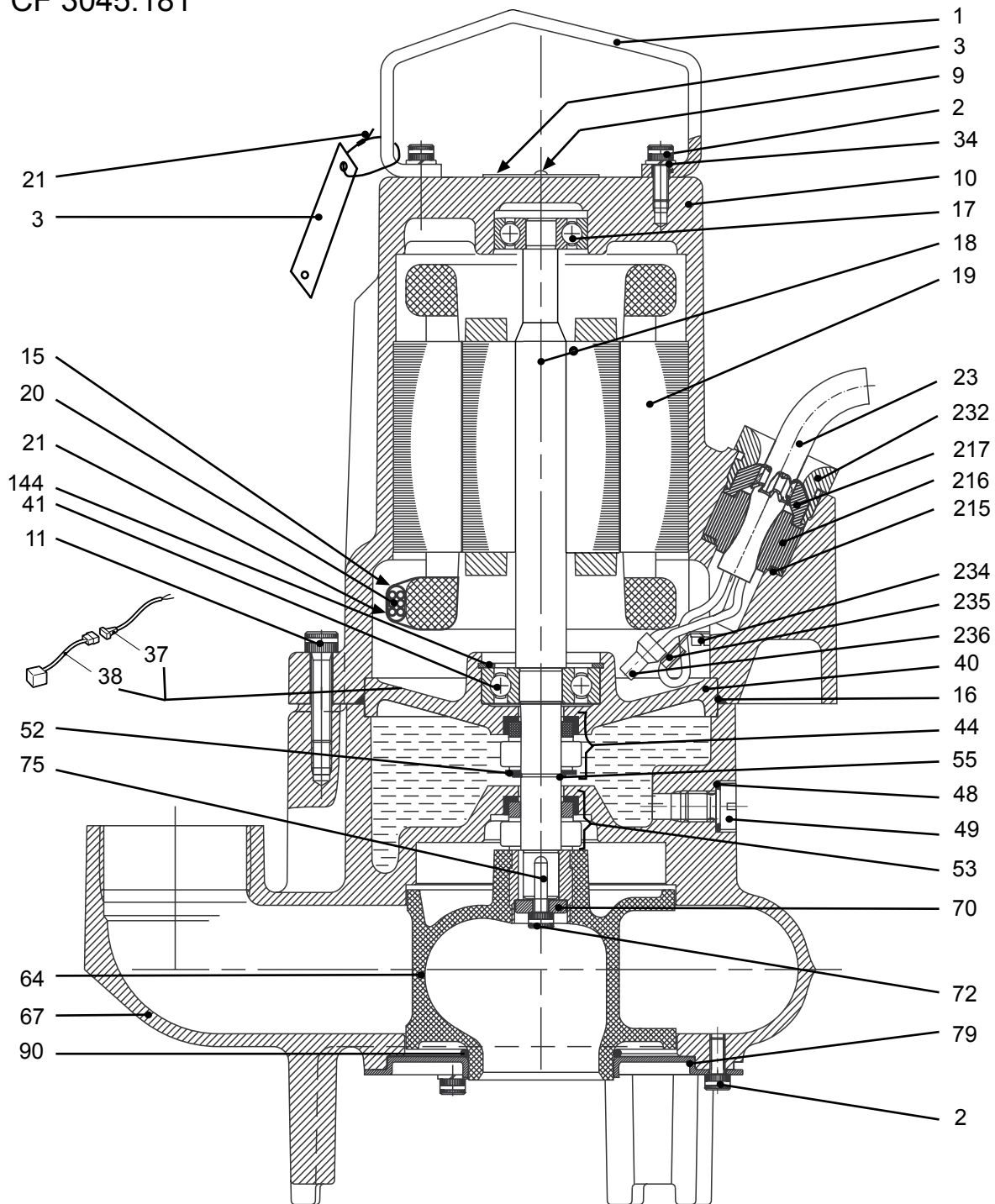
Type of Callout	Number	Indication
	6	Production cycle
	7	Running number

3 Exploded View

3.1 Drive Unit and Hydraulic Unit

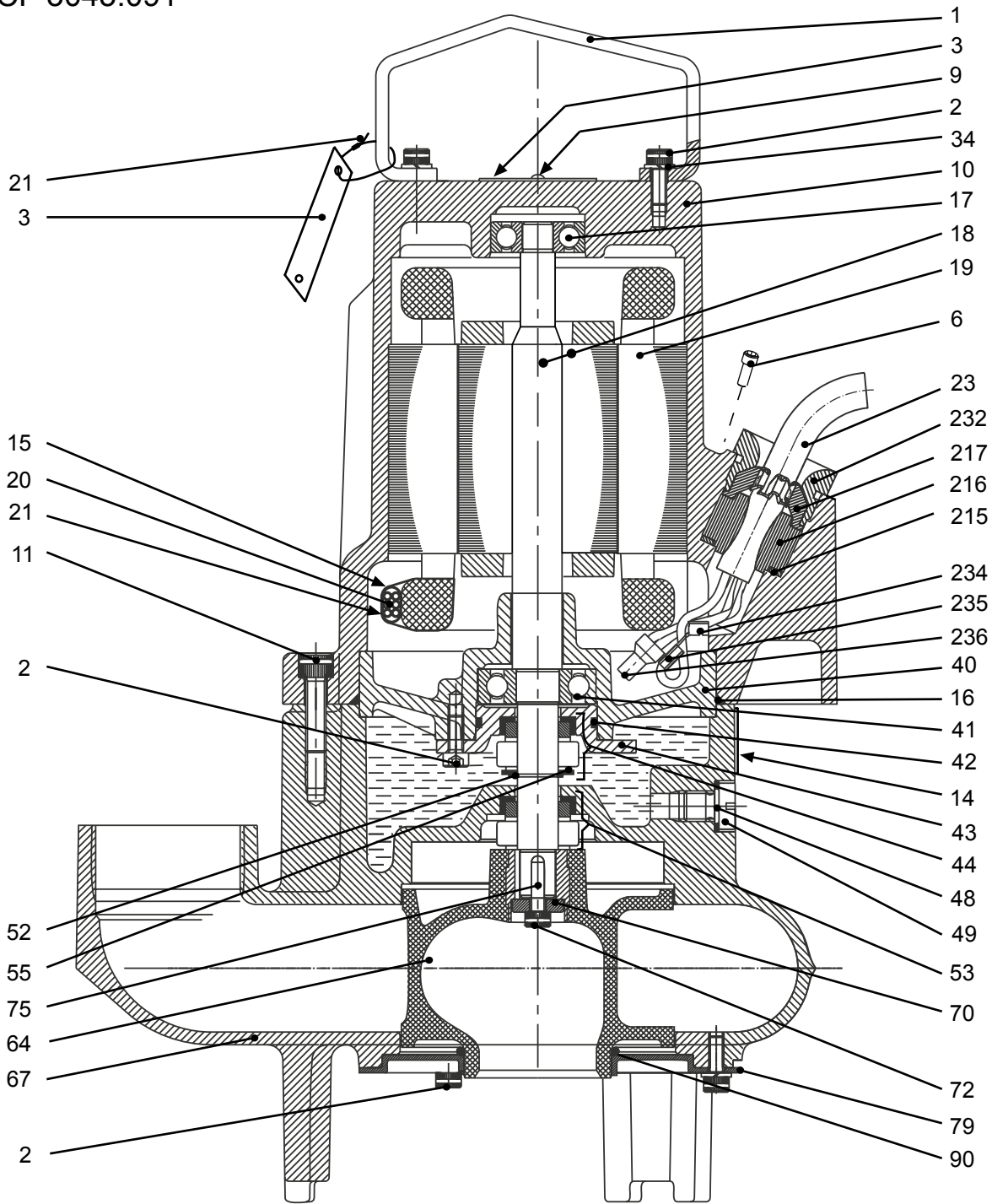
3.1.1 CF

CF 3045.181



30891D

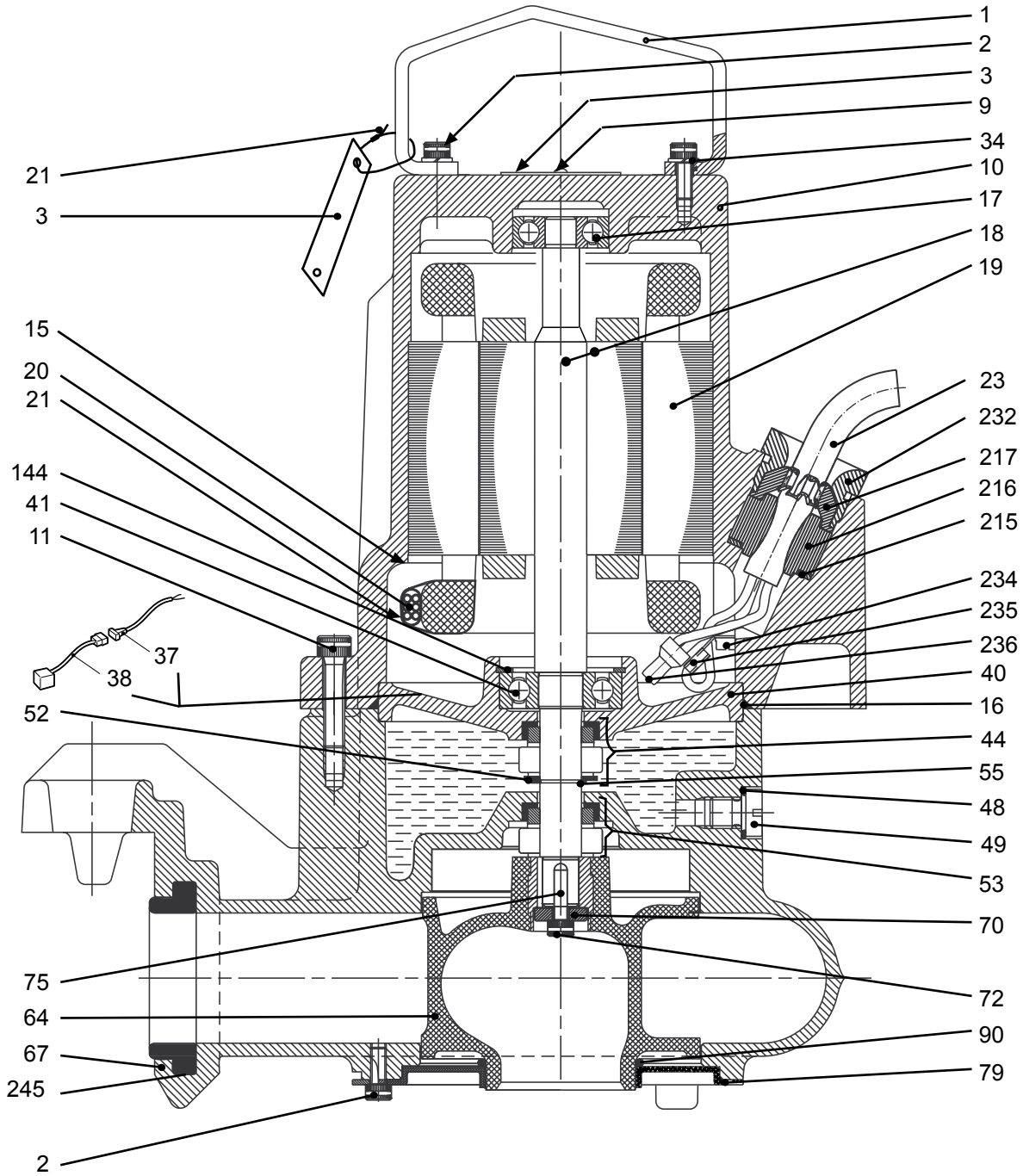
CF 3045.091



30897C

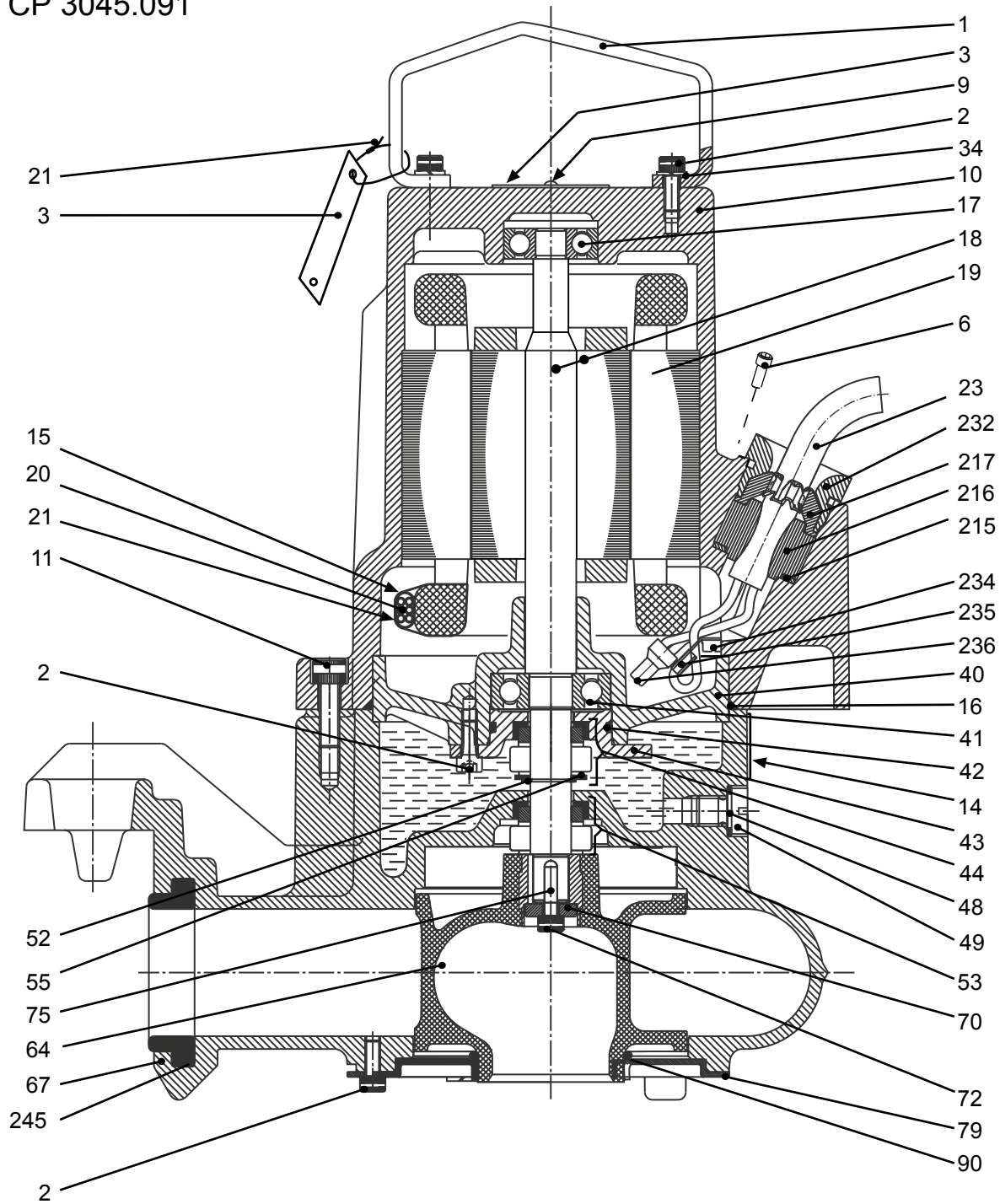
3.1.2 CP

CP 3045.181



30879D

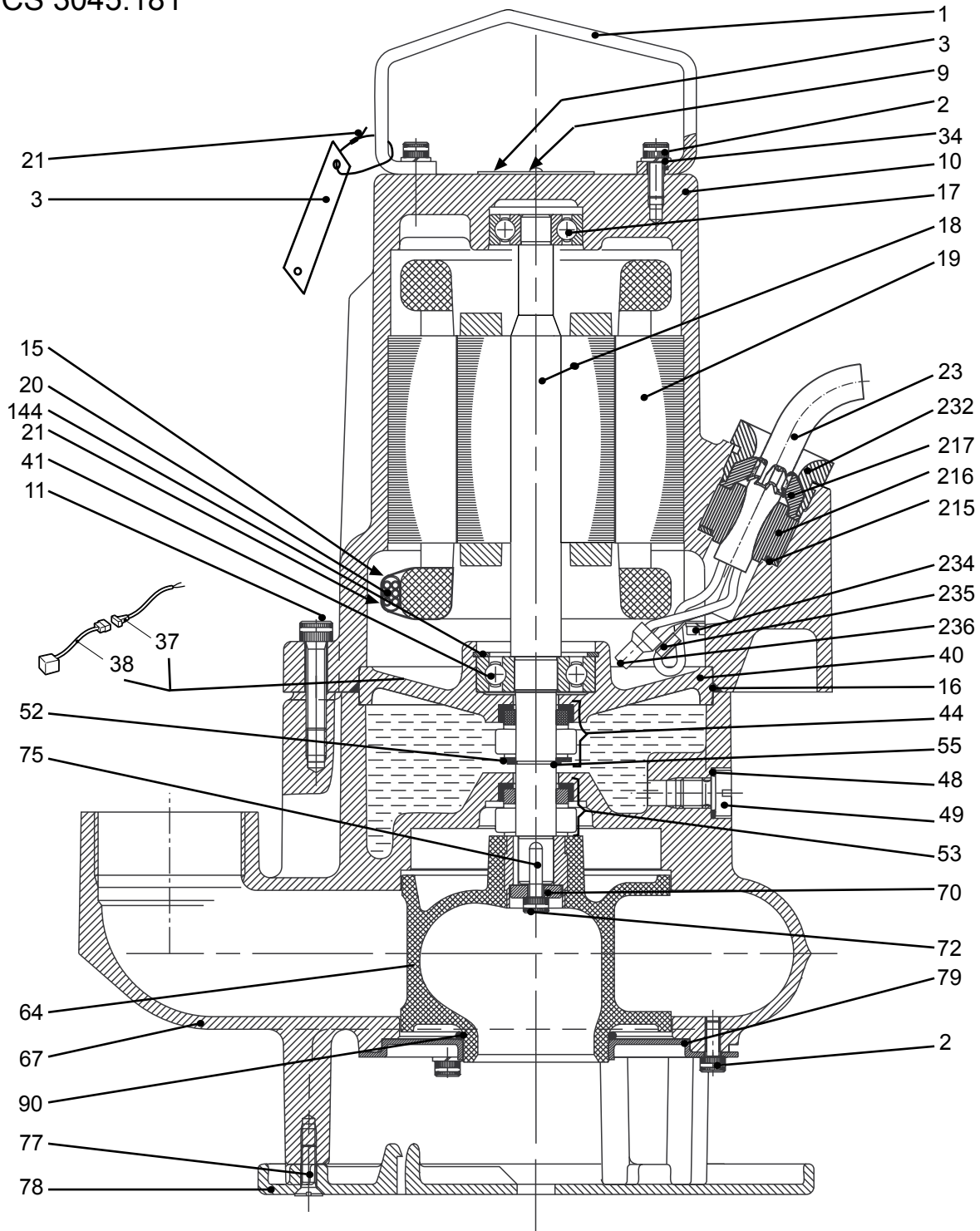
CP 3045.091



30895C

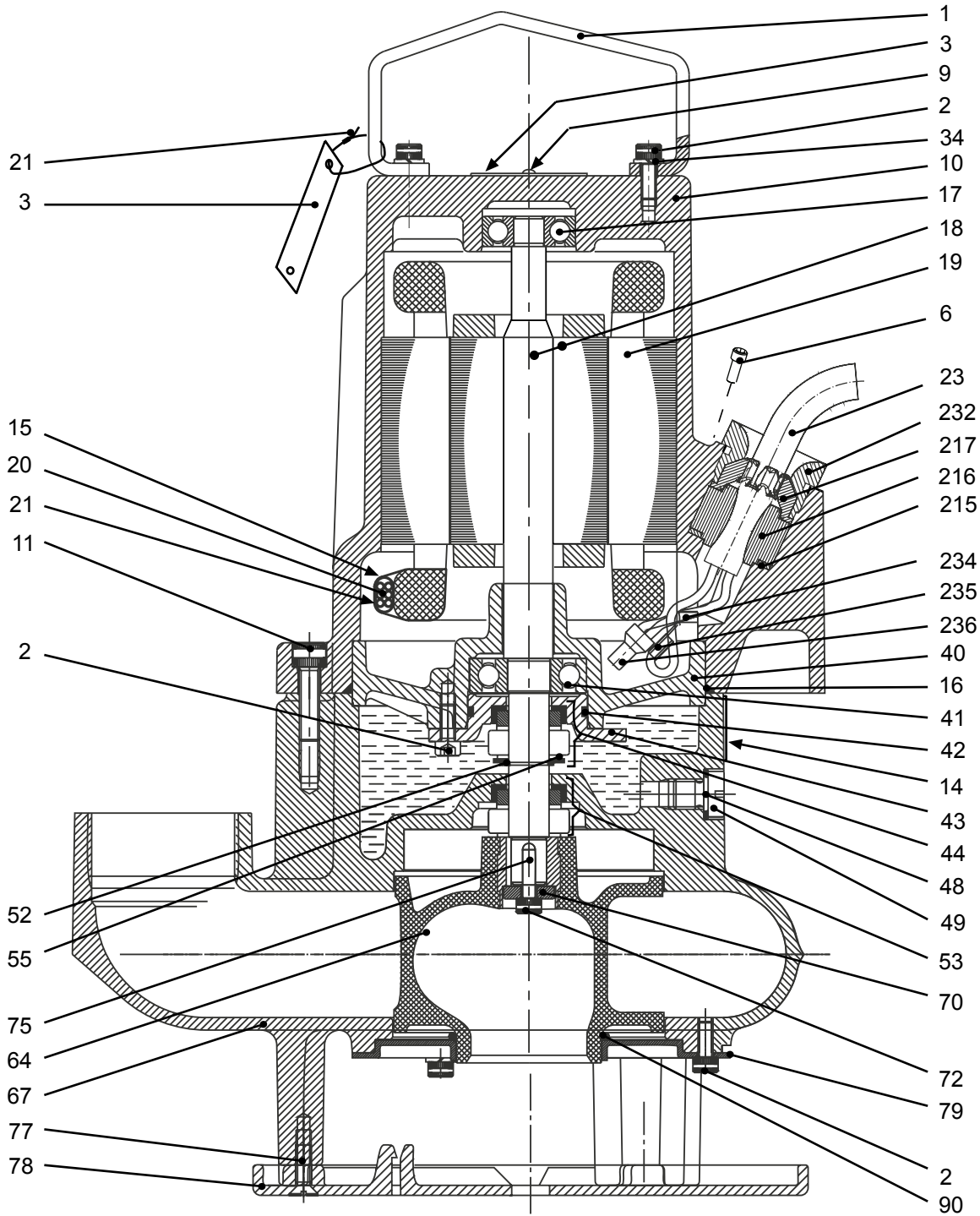
3.1.3 CS

CS 3045.181



30893D

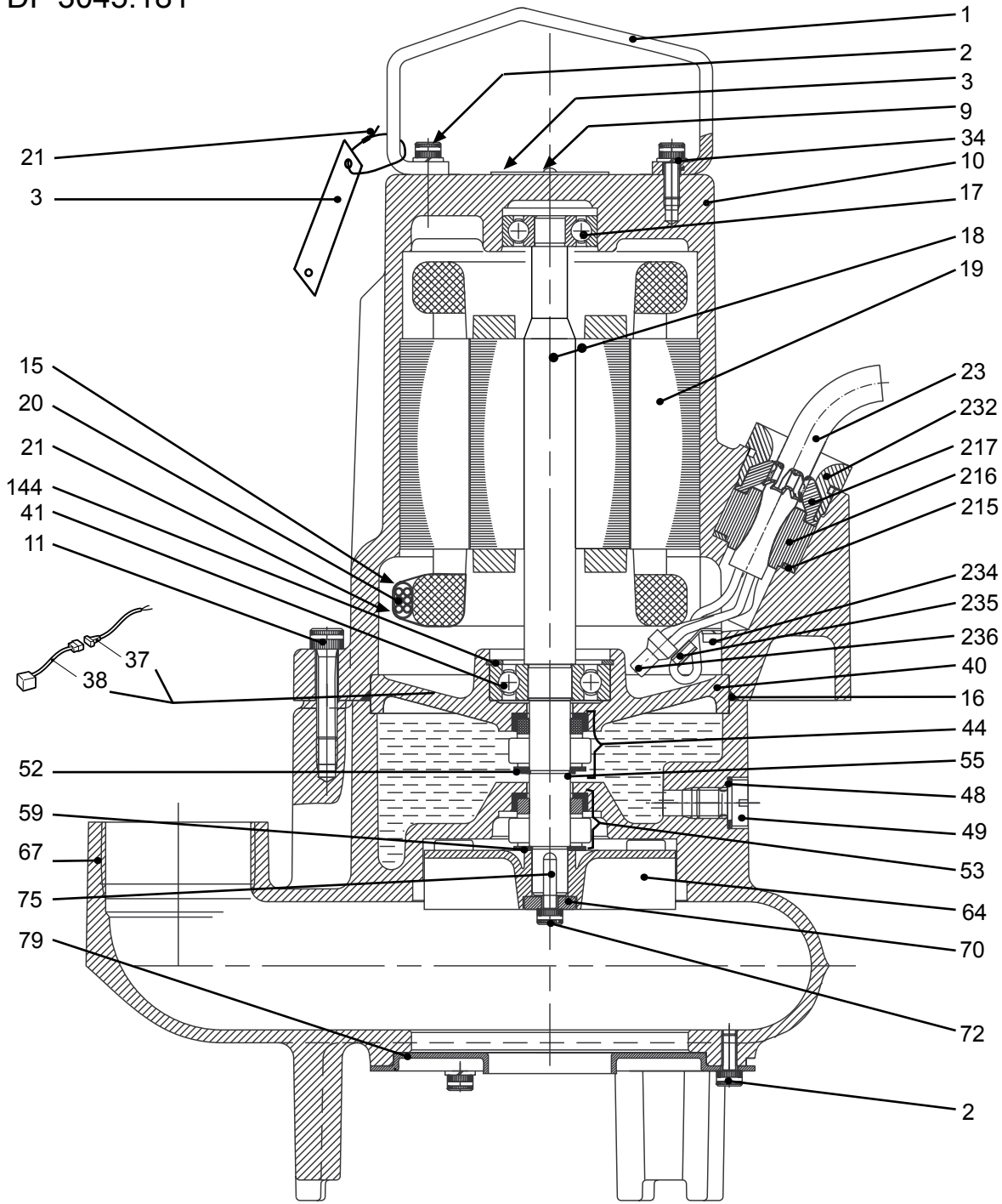
CS 3045.091



30899C

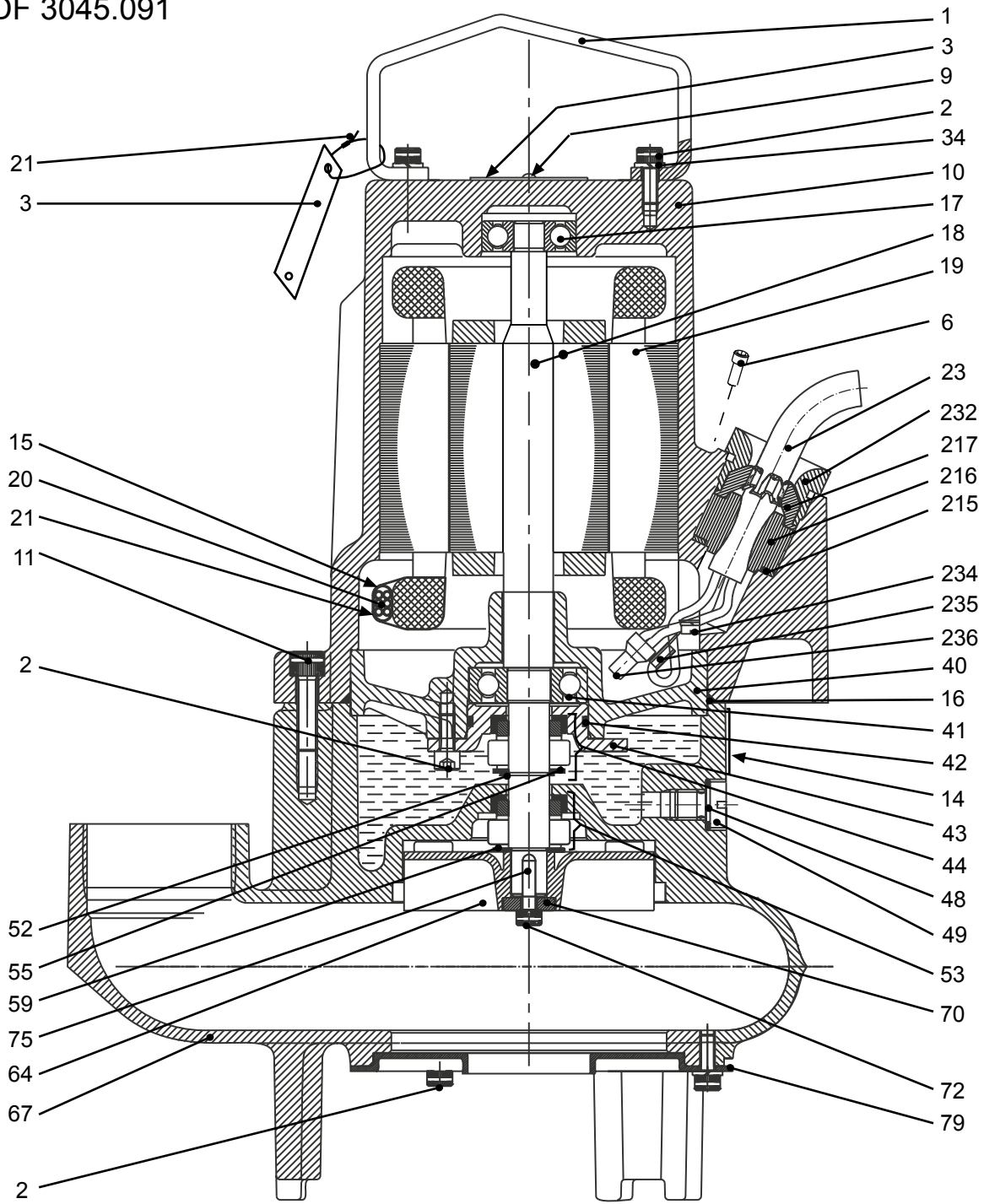
3.1.4 DF

DF 3045.181



30892D

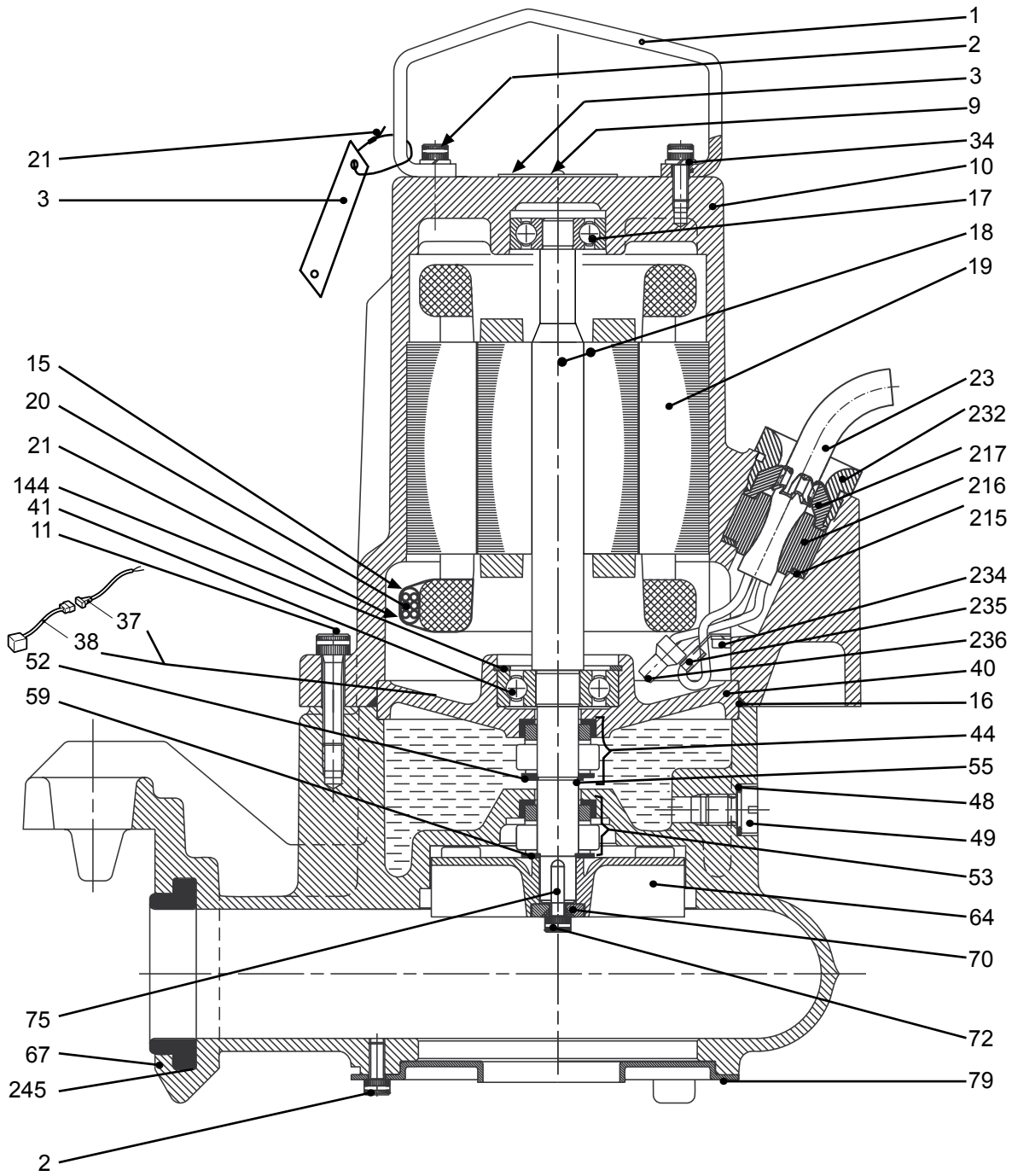
DF 3045.091



30898C

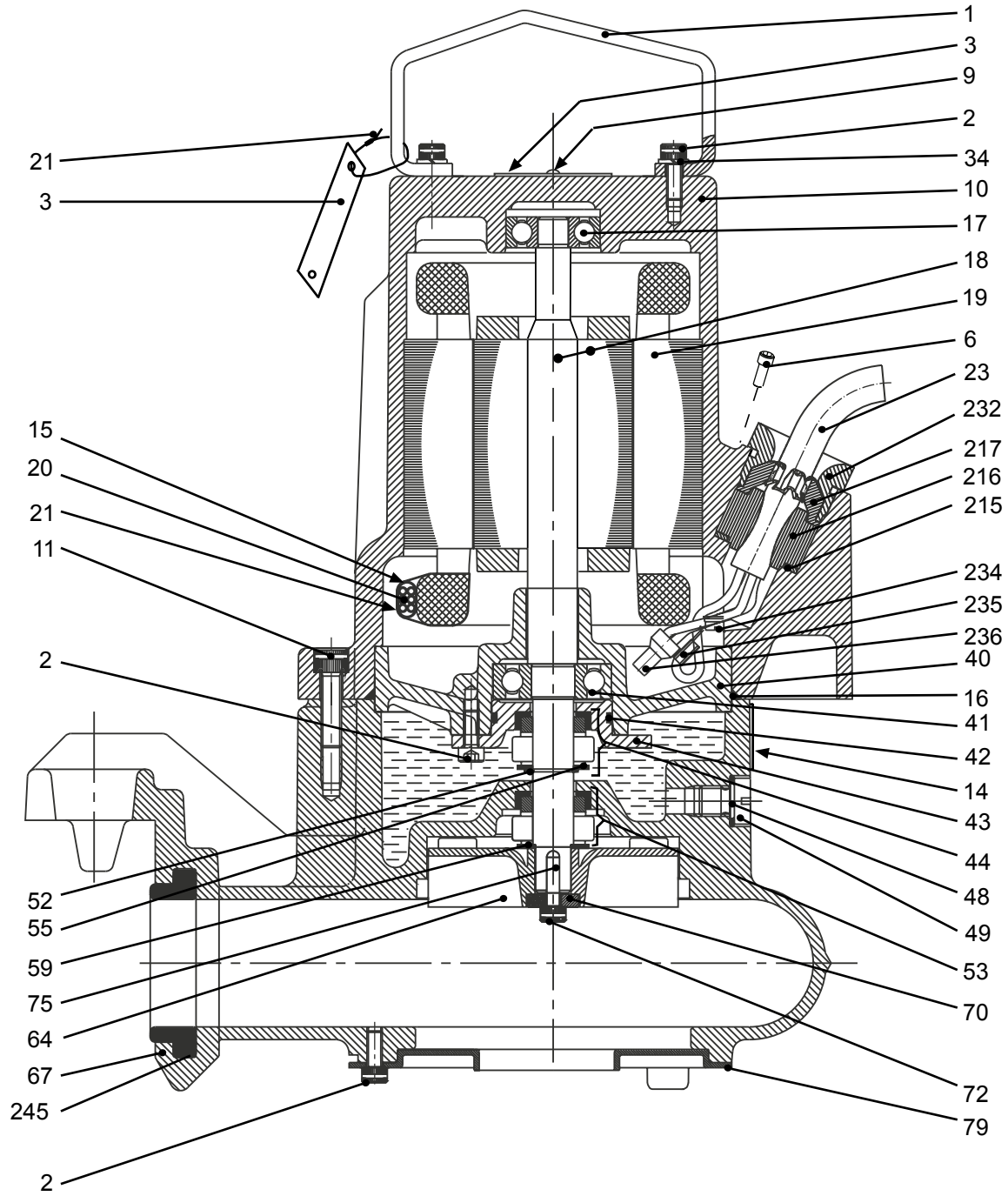
3.1.5 DP

DP 3045.181



30890D

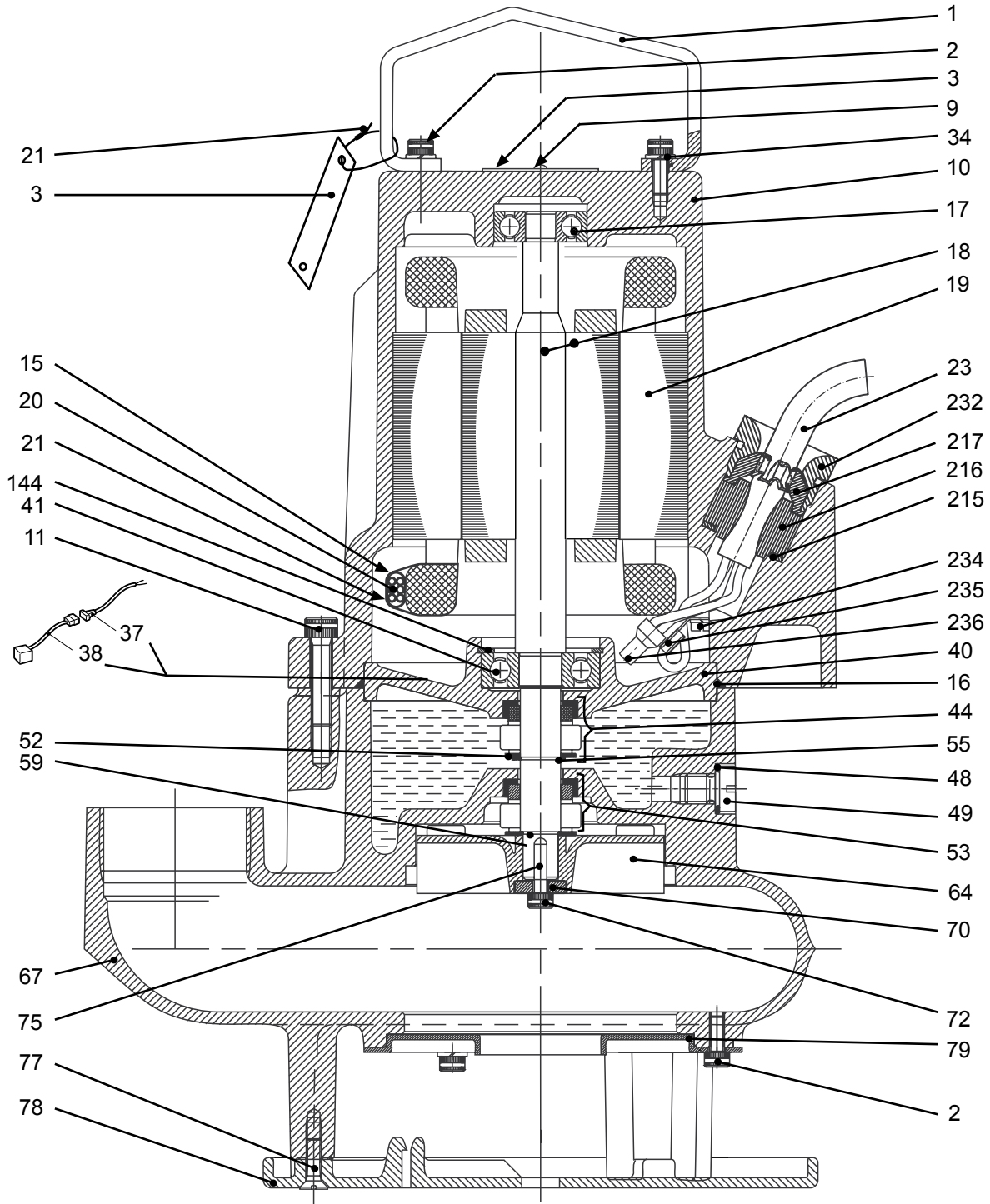
DP 3045.091



30896C

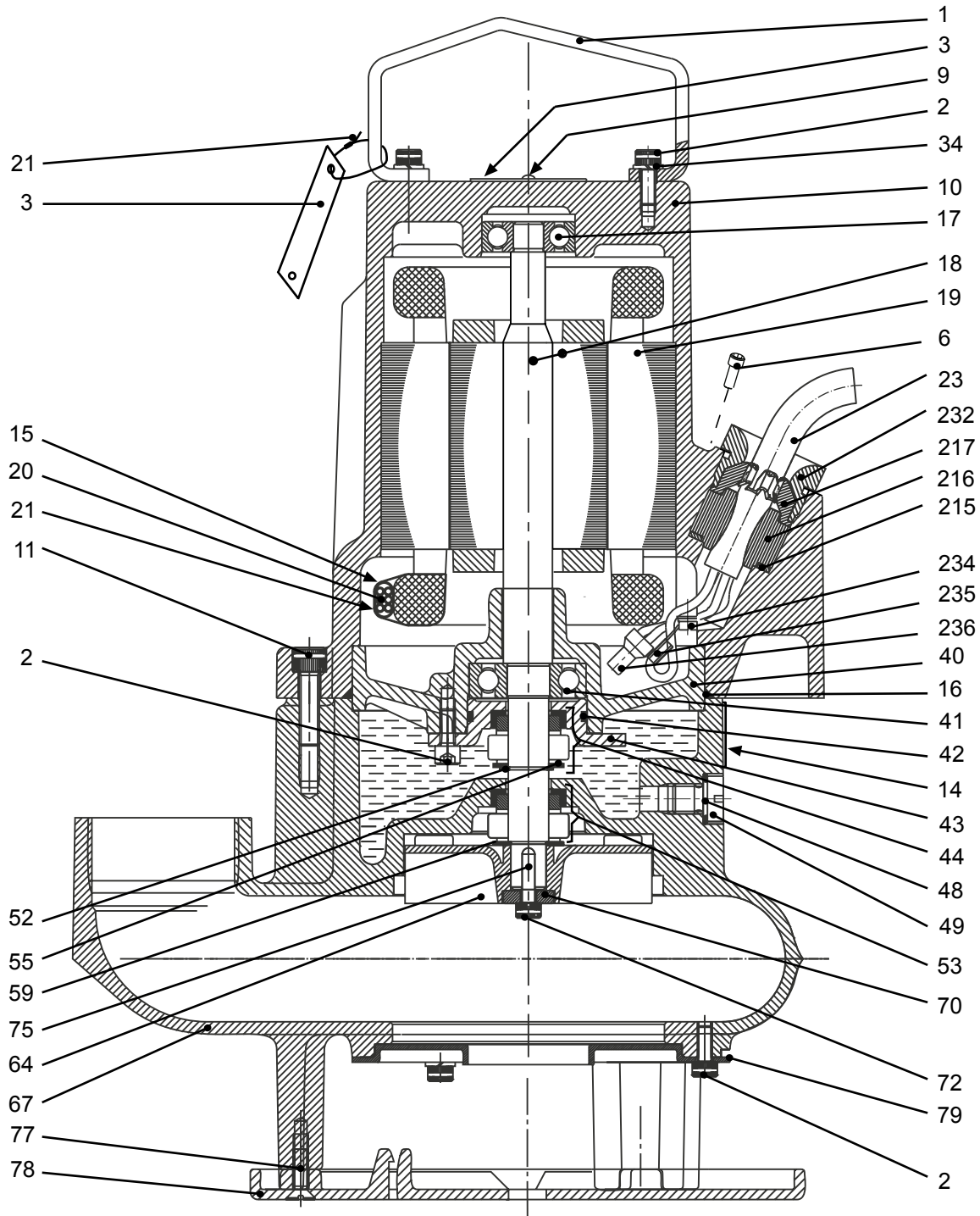
3.1.6 DS

DS 3045.181



30894D

DS 3045.091



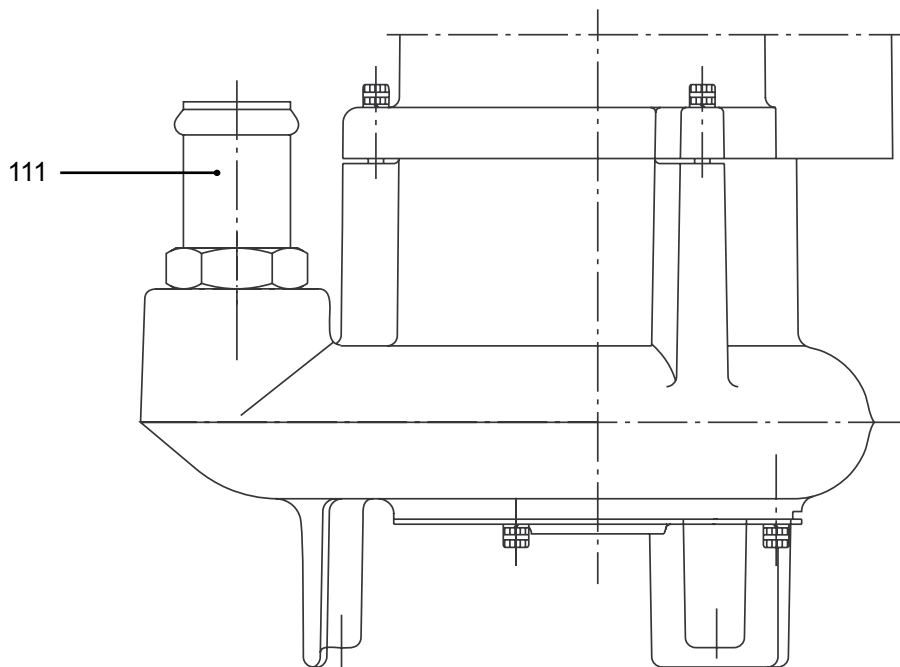
30900C

3.2 Installation Components

3.2.1 CF/CS/DF/DS

Hose

CF/CS/DF/DS 3045/3057

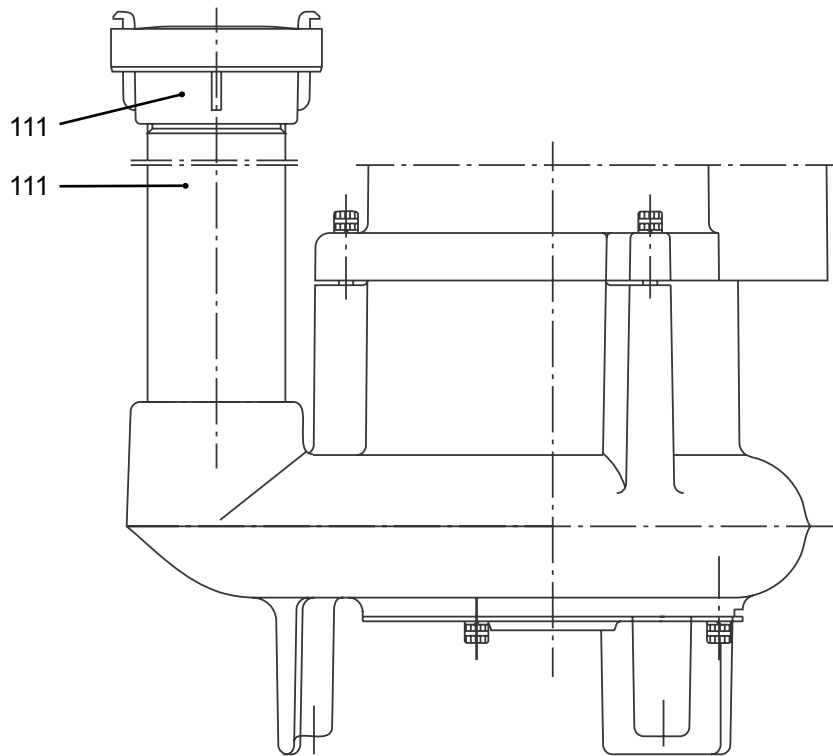


30640

3.2.2 CF/CS/DF/DS

Quick coupling

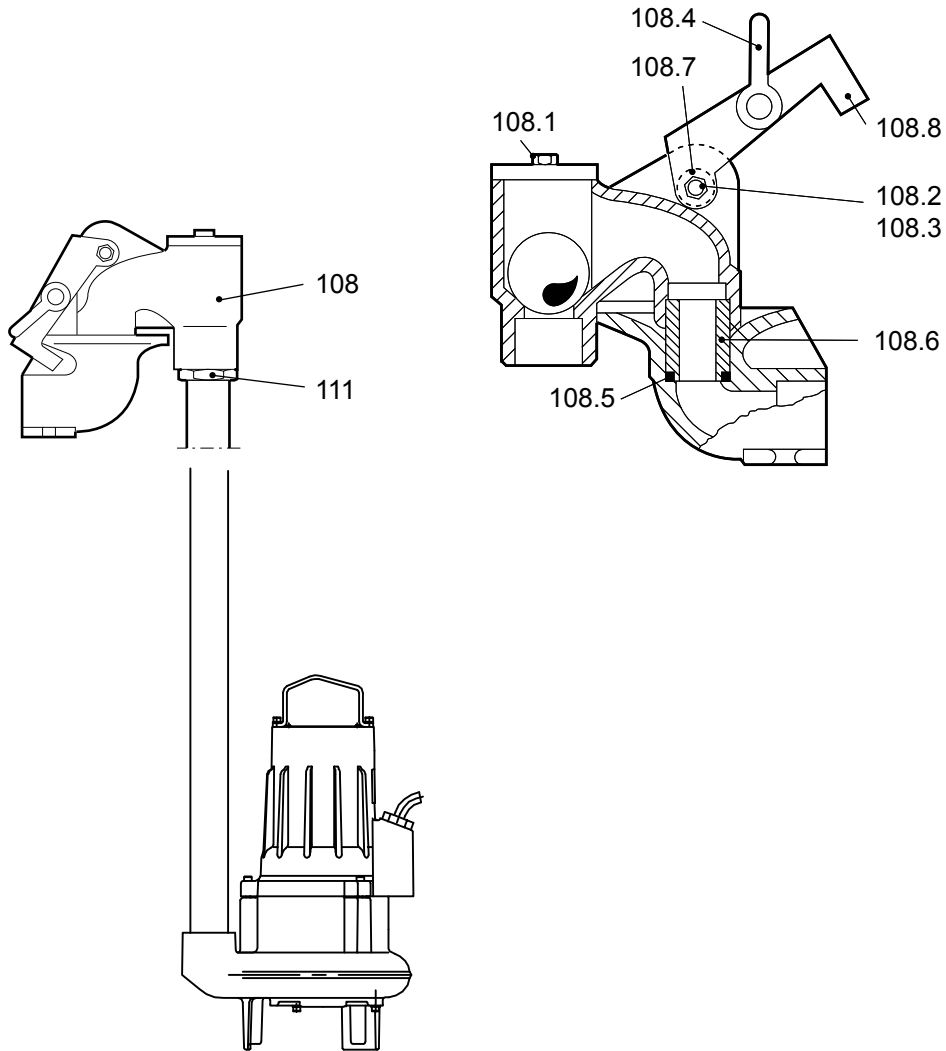
CF/CS/DF/DS 3045/3057



30641

3.2.3 CH

CH 3045 HT

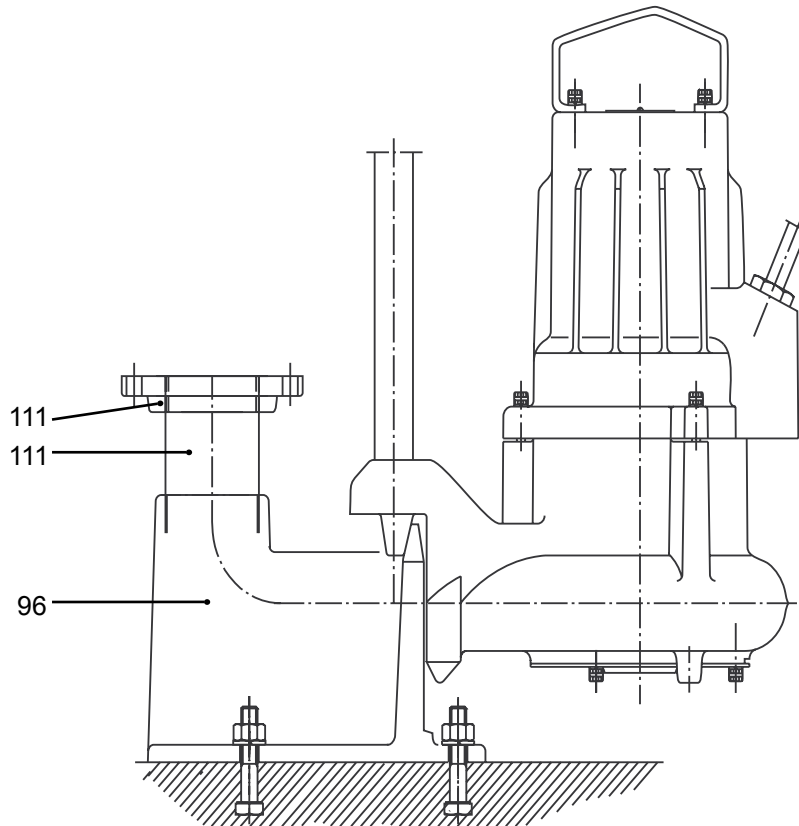


31408

3.2.4 CP/DP

Coupling

CP/DP 3045



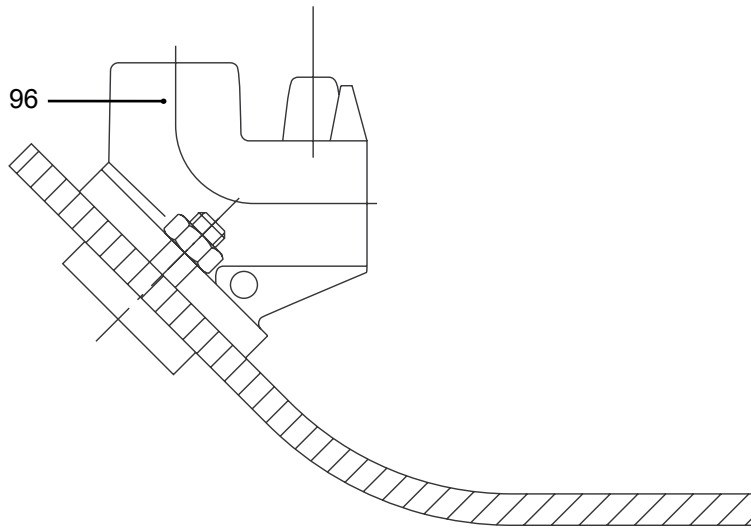
30643

3.2.5 CP/DP

TOP

CP/DP 3045/3057

TOP 50/65

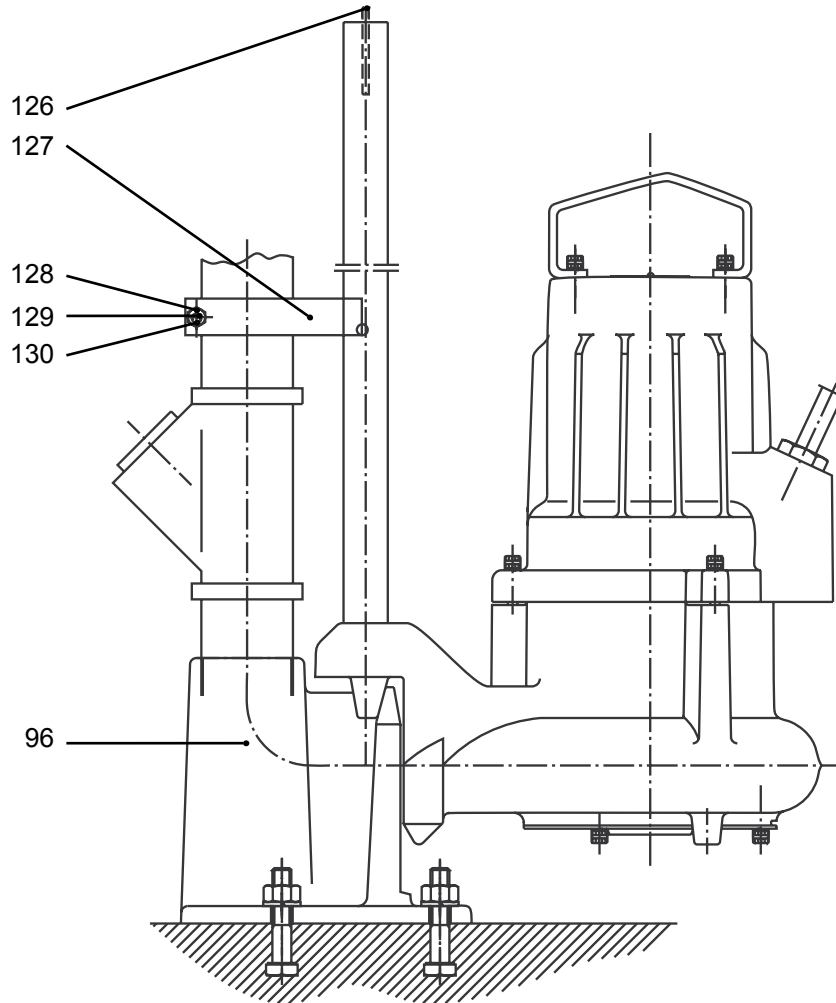


30642

3.2.6 CP/DP

Twin guide bars

CP/DP 3045



30637

4 List of Parts

4.1 3045.091/181

Pos. No	Part. No	Type	Denomination	Qty/Version	
				091	181
1	611 68 01	(Ex)	Lifting handle	1	1
2	82 00 13		Hex.socket hd screw M6X16-A2-70	8	5
3	630 68 00	(Ex)	Data plate USE 6306801 AS SPARE PART	2	2
5	594 43 00		Instruction plate		2
5	761 78 00		Name plate		1
6	83 02 73		Hex.socket hd screw M6X12-A4-70	1	
7	85 00 40		Plug	1	
9	82 20 88		Drive screw 4X5-A2/A4	4	2
9	82 20 88		Drive screw 4X5-A2/A4		4
10	722 52 03	(Ex)	Stator housing	1	
10	722 52 00		Stator housing		1
10	722 52 01		Stator housing Automatic level control Leakage detector in the stator house: FLS 1- phase 50Hz		1
11	83 04 45		Hex.socket hd screw M8X35-A4-80	3	3
14	630 69 00	(Ex)	Certificate plate EN	2	
14	630 69 01	(Ex)	Certificate plate IECEX	2	
14	630 70 00	(Ex)	Certificate plate FM	2	
15	427 13 00		Marking tape	1	1
15	772 17 00		Connection plate	1	1
16	82 72 91		O-ring 139.5X3 FPM	1	1
17	83 33 11		Ball bearing 12X37X12 MM	1	1
18	682 60 01	(Ex)	Shaft unit 1-phase	1	1
18	682 60 00	(Ex)	Shaft unit 3-phase	1	1
19	695 08 01		Stator 12-08-2b 1-phase 50 Hz 2-poles 115V P2=0,75kW	1	1
19	695 08 02		Stator 12-08-2b 1-phase 60 Hz 2-poles 115V P2=0,82kW/1,10hp		
19	695 13 01		Stator 12-08-2b 1-phase 50 Hz 2-poles 230V P2=0,75kW	1	1
19	695 13 01		Stator 12-08-2b 1-phase 60 Hz 2-poles 220V-230V P2=0,82kW/1,10hp		
19	695 13 01		Stator 12-08-2b 3-phase 50 Hz 2-poles 380V-400V Y 220V-230V D P2=1,20kW	1	1
19	695 13 02		Stator 12-08-2b 3-phase 60 Hz 2-poles 460V-480V Y P2=1,30kW/1,80hp		
19	695 13 02		Stator 12-08-2b 3-phase 50 Hz 2-poles 690V Y 400V D P2=1,20kW	1	1

Pos. No	Part. No	Type	Denomination	Qty/Version	
				091	181
19	695 13 03		Stator 12-08-2b 3-phase 50 Hz 2-poles 415V-440V Y P2=1,20kW	1	1
19	695 13 04		Stator 12-08-2b 3-phase 60 Hz 2-poles 440V-460V YSER 220V-230V Y// P2=1,30kW/1,80hp	1	1
19	695 13 05		Stator 12-08-2b 3-phase 50 Hz 2-poles 500V-550V Y P2=1,20kW 3-phase 60 Hz 2-poles 575V-600V Y P2=1,30kW/1,80hp	1	1
19	695 13 06		Stator 12-08-2b 3-phase 50 Hz 2-poles 190V-200V Y P2=1,20kW 3-phase 60 Hz 2-poles 200V-220V Y P2=1,30kW/1,80hp	1	1
19	695 13 07		Stator 12-08-2b 3-phase 60 Hz 2-poles 380V Y 220V D P2=1,30kW/1,80hp	1	1
21	83 45 59		Cable tie 200X2.4 PA 6/6 -55+105	3	3
23	94 20 61		Motor cable subcab 4G1.5+2X1.5	*	*
23	94 20 82		Motor cable subcab 7G2.5+2X1.5	*	*
23	94 20 59		Motor cable subcab 4G2.5+2X1.5	*	*
23	94 20 41		Motor cable subcab 4G1.5		*
23	94 20 42		Motor cable subcab 4G2.5		*
37	504 78 07		Cable unit	1	
37	504 78 07		Cable unit		1
38	518 89 02	(Ex)	Leakage sensor (FLS)	1	
38	518 89 02	(Ex)	Leakage sensor (FLS)		1
40	844 88 00	(Ex)	Bearing holder	1	
40	611 90 00		Bearing holder		1
41	83 33 10		Ball bearing 6303-2Z	1	1
42	82 81 01		O-ring 42.2X3 FPM	1	
43	611 96 00		Bearing cover	1	
44	83 91 18		Mechanical seal Al2O3/CARBON NBR	1	1
48	85 02 73		Seal washer	1	1
49	85 02 64		Plug	1	1
52	82 60 88		Retaining ring SGA 16-2304/1.4122	1	1
53	83 91 19		Mechanical seal RSiC/RSiC NBR	1	1
55	611 72 01		Washer 16.1X28X1.5	1	1
59	611 72 00		Washer 14.1X28X1.5	1	1
64	611 71 00		Torque flow impeller D-impeller MT 50Hz 3-phase Curve code: 230	1	1
64	611 71 02		Torque flow impeller D-impeller MT 50Hz 3-phase D-impeller MT 50Hz 1-phase	1	1
64	611 71 03		Torque flow impeller D-impeller MT 60Hz 3-phase	1	1

Pos. No	Part. No	Type	Denomination	Qty/Version		
				091	181	
64	611 70 00		Impeller	C-impeller HT 50Hz 3-phase	1	1
64	611 70 01		Impeller	C-impeller HT 50Hz 3-phase	1	1
				C-impeller HT 50Hz 1-phase		
				C-impeller HT 60Hz 3-phase		
64	611 70 02		Impeller	Impeller HT 60Hz 3-phase	1	1
				C-impeller HT 60Hz 3-phase		
				C-impeller HT 60Hz 1-phase		
				Curve code: 254		
67	611 65 00		Pump housing	HT MT C D DN 50 ISO G2 Strainer bottom Grey cast iron Installation: S	1	1
				HT MT C D DN 50 ISO G2 Grey cast iron Installation: F		
67	611 65 01		Pump housing	HT MT C D DN 50 2-11 1/2 NPT Grey cast iron Installation: F	1	1
				HT MT C D DN 50 2-11 1/2 NPT Strainer bottom Grey cast iron Installation: S		
67	611 64 00		Pump housing	HT MT C D DN 50 Sliding bracket Grey cast iron Installation: P	1	1
70	611 69 00		Washer 6.5X20X5		1	1
72	82 00 13		Hex.socket hd screw M6X16- A2-70		1	1
75	80 75 76		Parallel key		1	1
77	81 93 93		Slotted head screw M6X20- A4-70		3	3
78	516 24 00		Strainer bottom POLYETHYL. PEHD		1	1
79	555 65 01		Suction cover	D-impeller MT 60Hz 3-phase D-impeller MT 60Hz 1-phase D-impeller MT 50Hz 3-phase D-impeller MT 50Hz 1-phase	1	1
79	555 65 00		Suction cover	Impeller HT 60Hz 3-phase C-impeller HT 60Hz 3-phase C-impeller HT 60Hz 1-phase Curve code: 254 C-impeller HT 50Hz 3-phase C-impeller HT 50Hz 1-phase	1	1
90	82 74 63		O-ring 49.5X3 NBR		1	1
96	486 55 00		Discharge connection ISO G2"		1	1
96	486 55 01		Discharge connection 2-11 1/2 NPT		1	1
96	619 95 00		Discharge con.stat. IN/OUT 50/50 MM	Thread: ISO G2 Inner	1	1
96	619 95 01		Discharge con.stat. IN/OUT 50/50 MM	Thread: NPT 2-11 1/2 Inner	1	1
96	555 48 00		Discharge connection IN/OUT 50/R3"		1	1

Pos. No	Part. No	Type	Denomination	Qty/Version	
				091	181
96	555 48 01		Discharge connection NPT 3-8	1	1
101	669 77 00		Guide bracket unit SS	1	1
108	461 16 00		Discharge connection	1	1
108,1	81 41 32		Hexagon head screw M10X30-A2-70	2	2
108,2	81 41 32		Hexagon head screw M10X30-A2-70	1	1
108,3	82 23 33		Hexagon nut M10-A4-70	1	1
108,5	82 77 47		O-ring 38.0X7.0-NBR	1	1
108,6	464 40 00		Muff	1	1
108,7	464 41 00		Bush	1	1
108,8	464 43 00		Clamping piece	1	1
111	83 05 60		Nipple pipe CONN. 80 GALV	1	1
111	83 15 35		Flange DN 80	1	1
111	83 91 99		Coupling Outlet DN 50 Thread: NPT 2-11 1/2	1	1
111	83 92 71		Coupling POLYPROPYLENE PP R 2	1	1
111	83 05 09		Nipple pipe CONN. 50, L=180 MM	1	1
111	83 18 24		Coupling part Quick coupling: Storz diam=66 mm Outlet DN 50	1	1
111	83 19 31		Coupling part Quick coupling: Storz diam=66 mm Outlet DN 50	1	1
126	495 27 00		Clip	1	1
127	495 26 00		Clip	1	1
128	81 55 59		Hexagon head screw M8X65-A4-70	1	1
129	82 23 32		Hexagon nut M8-A4-70	1	1
130	82 35 74		Plain washer 8.4X16X1.8-A4-170HV	1	1
134	554 23 31		Starter START 156. 1-PHASE	1	1
134	554 30 02		Starter START 351-400-B-516-4	1	1
134	84 60 25		Starter 1-PHASE 230 V 50 HZ		1
134	554 29 00		Starter START 156-A		1
134	554 29 01		Starter START 156-A		1
134	554 20 01		Starter START 356-600-A-PG-2.5		1
134	554 20 02		Starter START 356-600-A-PG-4.0		1
134	554 20 03		Starter START 356-600-A-PG-6.3		1
136	220 25 02		Gland screw Pr 22.5		1
137	82 35 76		Plain washer 10.5X20X2-A4-170HV		2
138	275 80 02		Ring		1
139	84 32 31		Level switch		1
140	84 60 48		Clip DIAM.16		1

Pos. No	Part. No	Type	Denomination	Qty/Version	
				091	181
141	82 23 29		Hexagon nut M4-A4-70		1
142	83 93 97		Protective cap 9X7.5 MM PE		1
143	81 73 41		Slotted head screw M4X10-A4-70		1
144	82 62 04		Retaining ring SGH 47		1
169	667 40 00		Sticker	2	2
215	82 40 61		Plain washer 24.5X35X2-A2-70	1	1
216	84 17 92		Seal sleeve (14)-16 MM NBR	1	
216	84 37 98		Seal sleeve (16)-18 MM NBR	1	1
216	84 17 95		Seal sleeve (20)-22 MM NBR	1	
216	84 37 95		Seal sleeve (10)-12 MM NBR		1
216	84 17 91		Seal sleeve (12)-14 MM NBR		1
216	84 37 97		Seal sleeve (14)-16 MM NBR		1
216	84 17 94		Seal sleeve (18)-20 MM NBR		1
217	678 58 16	(Ex)	Cable clip 14-(16) MM	1	1
217	678 58 18	(Ex)	Cable clip 16-(18) MM	1	1
217	678 58 22	(Ex)	Cable clip 20-(22) MM	1	
217	678 58 12	(Ex)	Cable clip 10-(12) MM		1
217	678 58 14	(Ex)	Cable clip 12-(14) MM		1
217	678 58 20	(Ex)	Cable clip 18-(20) MM		1
232	397 81 00	(Ex)	Gland screw Pr 37	1	1
234	82 17 61		Cutting screw TAPTITE-M6X12	1	1
235	83 43 58		Cable lug UL/CSA 1.04-2.62 MM2 M6	1	1
236	83 42 65		Terminal block 600V/20A UL	4	4
236	83 42 67		Terminal block 600V/20A UL	1	1
236	83 42 65		Terminal block 600V/20A UL	5	5
236	83 44 23		Closed-end splice 4.0-9.0 (AWG 8)	2	2
236	83 44 24		Closed-end splice 3-6 (AWG 12-10)	5	6
236	83 44 23		Closed-end splice 4.0-9.0 (AWG 8)	6	
245	555 59 01		Seal ring PERBUNAN, GREY	1	1
800	83 10 33		O-ring kits	1	1
900	601 89 49		Basic repair kit	1	1
901	90 17 52		Oil ISO VG 32	*	*
904	514 92 03		Puller compl.	1	1
904	611 91 00		Mounting socket 1.4301	1	1



ООО «Бауманс Груп» - официальный партнер фирмы Flygt в России.

Тел: +7 495 121 49 50

Эл. почта: info@baumgroup.ru

Сайт: www.baumgroup.ru